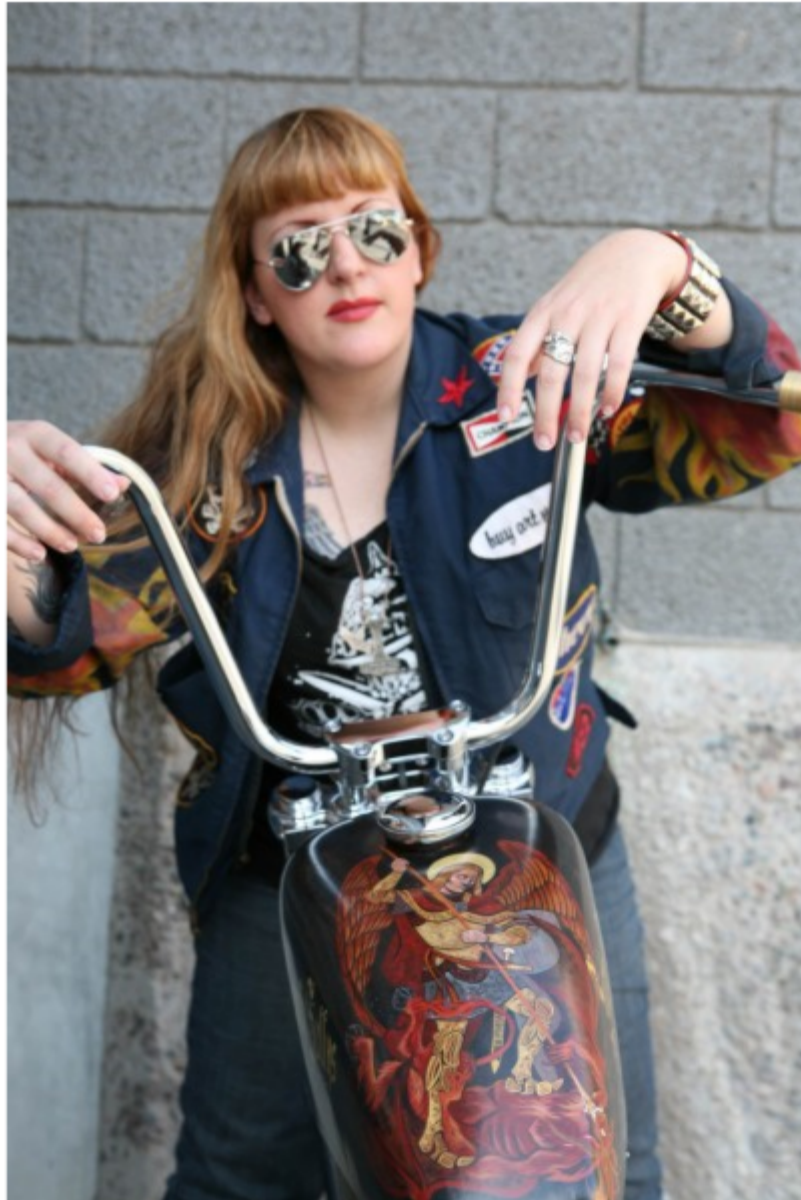


## Sucker Punch Sally's Welcomes Artist Sara Ray as Newest Member of SPS Crew

By: Sucker Punch Sally - press release

Posted: Apr.18.09



Scottsdale, Ariz--April 16, 2009--Sucker Punch Sally's today announced that artist Sara Ray is now a permanent member of the SPS crew. Ray has relocated to Arizona, where she will serve as Sucker Punch Sally's in house artist.

Despite the sluggish economy, Sucker Punch Sally's continues to expand and has hired Ray to help with the artistic direction of the company's product lines. Ray teamed up with Sucker Punch Sally's in 2008 to produce ten limited edition custom bikes, all featuring original designs hand-painted by Ray. In her new role, Ray will assist with apparel design, motorcycle paint schemes, custom paint jobs and will provide general design help.

"It was one of those situations where you meet someone and instantly you are on the same page. Her talents translate perfectly to what we do and she has been like family since day one. We finally overwhelmed her with so much work that it just made sense for her to come to Arizona full time." Said Christian Clayton, Owner of Sucker Punch Sally's.

Ray specializes in hot rods, pin ups, rockabilly posters, nose art and World War II scenes - subject matter that complements SPS's signature old-school style. Her portfolio contains the traditional oil on canvas, but her most recent artistic ventures have included hand-painted Fender guitars, custom motorcycles and airplanes. In her spare time, Ray wrenches on her own hot rods and travels to air, military and art museums.

"Moving to Arizona became necessary as my involvement with the Sucker Punch Sally's team has grown into more than just painting bikes. They've given me the opportunity to create a visual entity of the company with absolute free reign and total conviction in my ideas and abilities. Getting to work within a group of people who back and encourage your Hot Rod addiction 110 percent and where free time is spent doing the same things you do for work is an outstanding situation to say the least. I'm excited to bring my cards to the SPS table and already creating a massive portfolio of art and ideas that are going to showcase very soon." Said Sara Ray.

Sucker Punch Sally's is a custom motorcycle manufacturer specializing in old school, stripped-down motorcycles. Heading into 2009, their Swinger was awarded production custom of the year and in 2008 the 66 Bobber and Traditional both won awards. All of these facts solidify SPS's position at the top of the production motorcycle market.

Their bikes have been featured in The Horse Backstreet Choppers, Motorcyclist, Cycle World, Easyriders, Street Chopper, V-Twin, Barnett's, Sync Magazine, Ironworks, Cycle Source and Hot Bike. Sucker Punch Sally's is the place to go if you're looking for a totally custom, old school chopper, or just a reasonably priced production bike. Visit Sucker Punch Sally's on the Web at [suckerpunchsallys.com](http://suckerpunchsallys.com) or call them at (480)778-9500. For dealer inquiries contact Alex McClelland [alex@suckerpunchsallys.com](mailto:alex@suckerpunchsallys.com)